



# 2000KG GARAGE JACK INSTRUCTION MANUAL



*"If the product fails to perform as specified we'll happily offer a refund or exchange"*

Manufactured and packaged for SRGS PTY LTD ABN 23 113 230 050  
6 Coulthards Avenue, Strathpine QLD 4500, Australia



# 2000KG GARAGE JACK INSTRUCTION MANUAL

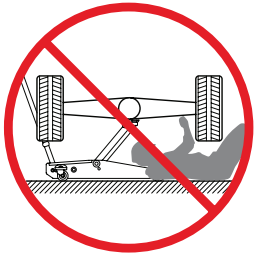
COMPLIES WITH CONSUMER GOODS (TROLLEY JACKS)  
SAFETY STANDARD 2017



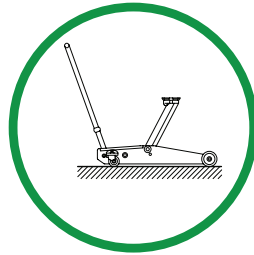
PLU 633598



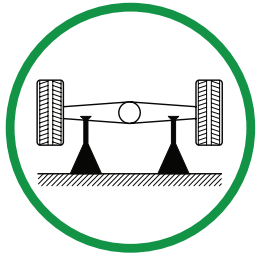
## WARNING



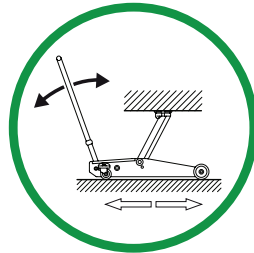
**DEATH OR INJURY  
FROM  
INCORRECT USE**



**FLAT HARD  
LEVEL GROUND**



**USE TWO  
SUPPORT STANDS**



**FREE TO ROLL  
DURING LIFTING  
AND LOWERING**

**REFER TO VEHICLE  
MANUFACTURER'S  
MANUAL FOR INSTRUCTIONS**

## SAFETY USAGE INSTRUCTIONS

### INSPECTION:

1. Before each use of this jack, an inspection of the jack should be made. This should include checking for cracks in the welds, leaking oil, general damage, loose or missing parts and air in the hydraulic system.
2. If the jack has been recently transported or stored for a period of time an air purge should be completed.
3. Do not use if any damage is evident.
4. An annual inspection of the jack is also recommended.

### INSTRUCTIONS:

1. Consult the vehicle manufacturer's manual prior to the lifting of the vehicle.
2. Conduct a pre-operational check of the equipment.
3. Use the hydraulic trolley jack for lifting and lowering only; the raised vehicle should be supported on suitably rated vehicle support stands.
4. Use the hydraulic trolley jack on a hard level surface and ensure it is free to roll during lifting and lowering.
5. No person should remain in a vehicle that is being lifted.
6. Chock the unlifted wheels of the vehicle.
7. Centrally locate the load on the head cap.
8. Support the vehicle on suitably rated vehicle support stands and remove the hydraulic trolley jack prior to commencement of work on the vehicle.
9. No person should get bodily under a vehicle that is supported only by a hydraulic trolley jack.

## MAINTENANCE INSTRUCTIONS

### OIL TYPE:

**IMPORTANT:** When adding or replacing oil, always use a good grade of HYDRAULIC FLUID. (Recommended ISO VG32, SAE10 or equivalent) Avoid mixing types of fluid. **DO NOT** use Brake Fluid, Alcohol, Glycerine, Detergent, Motor Oil or Dirty Oil.

### ADDING OIL & OIL LEVEL:

1. With the jack fully lowered remove the fill plug on the oil chamber. (Fig. 1).
2. Fill using an oil can with a fine spout. The recommended oil capacity is approximately 210ml. If low, add oil as required.
3. Replace the fill plug on the oil chamber.

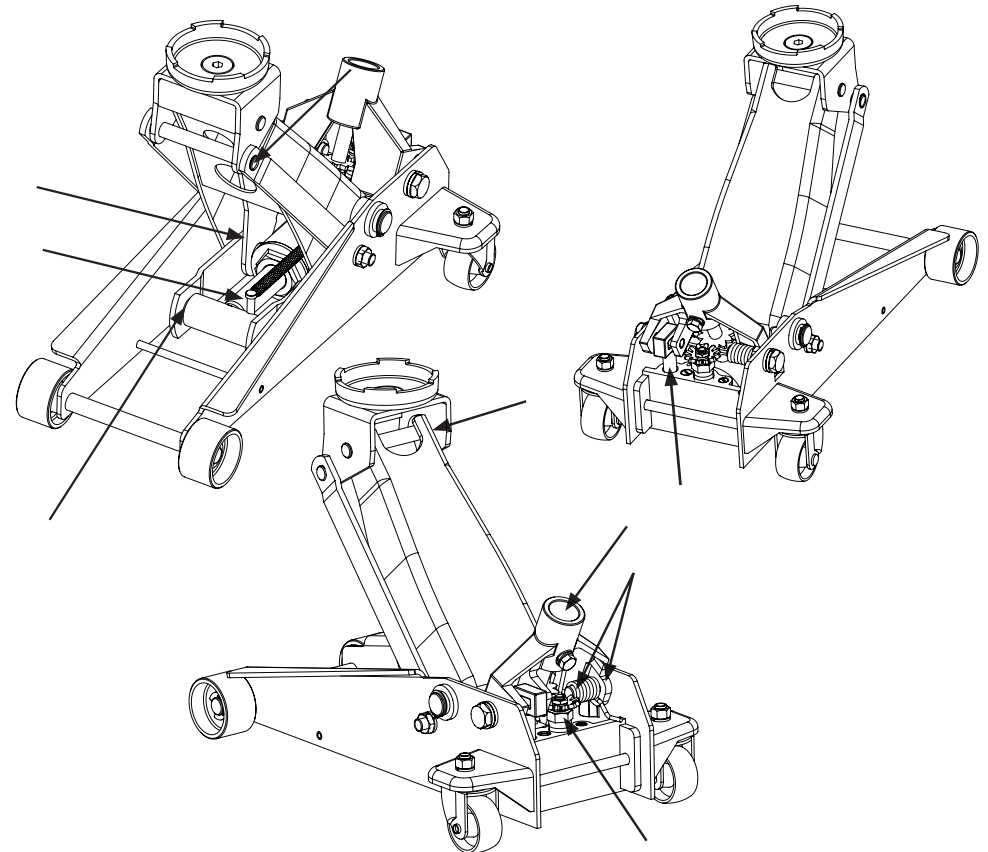
### AIR PURGE INSTRUCTIONS:

1. With the jack fully lowered remove the fill plug on top of the cylinder.
2. Insert the handle into the handle socket to operate the release valve.
3. Turn the handle anti clockwise to open the valve.
4. Pump the handle up and down quickly 10-15 times to force air from the system.
5. Replace the fill plug.



### LUBRICATION:

Lubricate all pivoting and moving points with lubricating oil prior to initial use and after every 20 lifting/lowering cycles or 3 months (whichever occurs first). Detailed lubricated positions please refer to below:



### RUST PREVENTION & STORAGE:

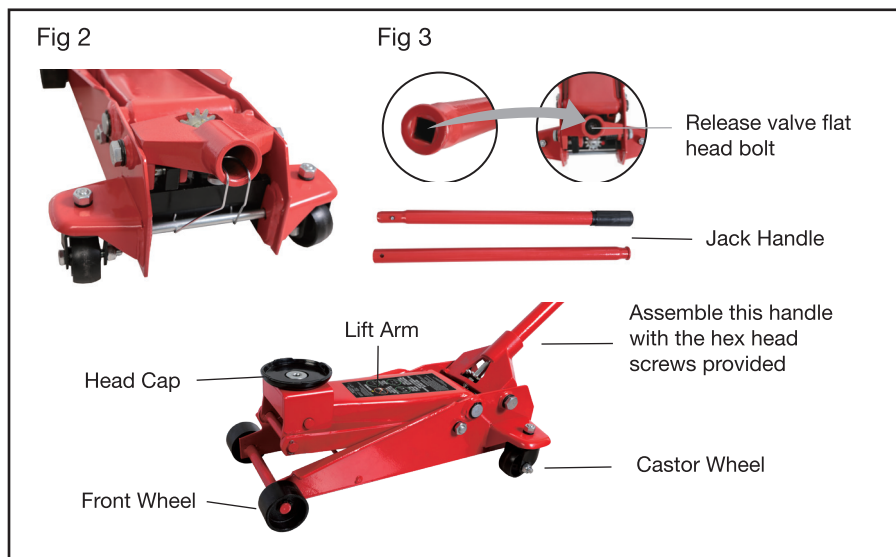
1. Check jack every few months for any signs of rust or corrosion. Clean as needed by wiping with an oily cloth.
2. When not in use, always store jack with wheels on horizontal surface and with lifting arm lowered all the way.

Modifications must NOT be carried out or accessories added.

## ASSEMBLY INSTRUCTION

### TO ASSEMBLE THE JACK FOR USE:

1. Insert together the 2 parts of the handle.
2. Depress the handle socket with palm of hand, keep fingers clear when removing holding spring (Fig 2).
3. Insert the assembled handle into handle socket on the jack (Fig 3).
4. Lubricate jack prior to use (see lubrication on page 4).
5. Purge any air in the hydraulic system (see Air Purge Procedure).



### SPECIFICATIONS

Working Load Limit: 2000kg  
 Jack Dimensions: 572mm x 328mm x 175mm  
 Height Lowered: 128mm  
 Height Raised: 474mm

This hydraulic trolley jack is designed to be used with a 110mm diameter head cap, and a two piece handle of 1104mm length.

## OPERATING INSTRUCTIONS

### TO RAISE THE JACK:

1. Close the release valve by turning clockwise with the jack handle until the release valve is closed. Do not over tighten.
2. Chock the wheels of the vehicle with wheel chocks. This will help ensure that the vehicle will remain stable during lifting.
3. Place the jack so the head cap on the lifting arm is directly under the object to be lifted. Please refer to the vehicle manufacturer owner's manual to locate approved lifting points on the vehicle.
4. Pump the jack handle until the head cap is almost in contact with the vehicle. Check that the head cap will be centrally located at the vehicle manufacturers recommended lifting point.
5. Continue to pump the jack handle to lift the vehicle to the desired height.
6. After lifting the vehicle to the desired height, support the load with approved vehicle support stands before working under the vehicle.

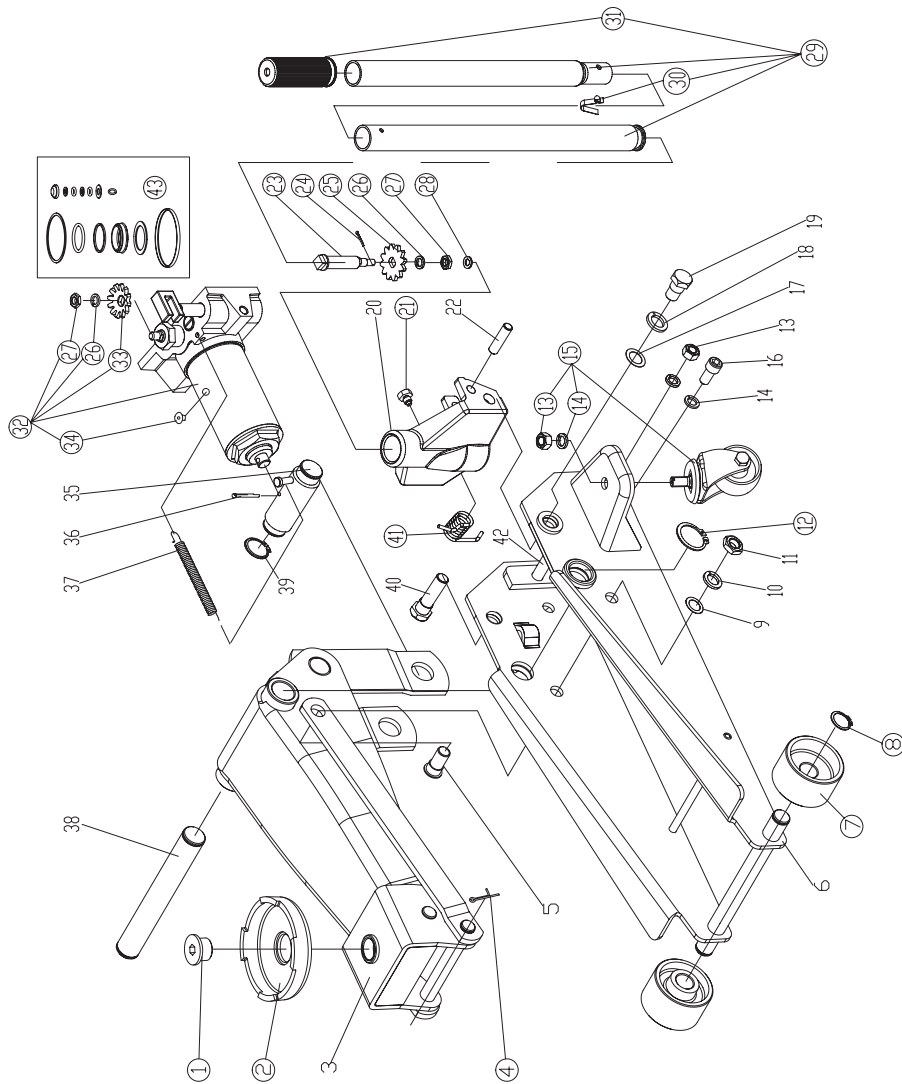
**CAUTION:** DO NOT place any part of your body under a vehicle that is only supported by a jack. Use an approved and suitably rated pair of Vehicle Support Stands (Car Stands) before working under any vehicle.

### TO LOWER THE JACK:

1. With the jack supporting the weight of the vehicle, remove the vehicle support stands.
2. Very slowly turn the release valve anti-clockwise using the jack handle. This will open the release valve and when the release valve starts to open, the lifting arm will lower.
3. The speed which the jack will lower, will be dependent on how rapidly the valve is opened. The greater it is opened the faster the jack will lower.

**CAUTION:** Ensure no part of the body or any objects are under the vehicle when lowering the load.

## PARTS LIST



Ref. No.	Qty.	Description	Ref. No.	Qty.	Description
1	1	Head Cap pin	23	1	Shaft for spur gear
2	1	Head Cap	24	1	Cotter pin Ø2 X 16mm
3	1	Lifting arm assembly	25	1	Spur gear
4	2	Cotter pin 2.5 X 25	26	2	Spring washer M10
5	2	Connecting rod pintle	27	2	Nut M10
6	1	Frame assembly	28	1	Washer M8
7	2	Front wheel	29	1	Handle assembly
8	2	C-clip Ø18mm	30	1	Handle lock pin
9	2	Washer M14	31	1	Handle cover
10	2	Spring washer M14	32	1	Power unit assembly
11	2	Nut M14	33	1	Helical gear
12	2	C-clip Ø25mm	34	1	Fill plug
13	4	Nut M12	35	1	Coupling connector
14	6	Spring washer M12	36	1	Cotter pin Ø4 X 45mm
15	2	Rear castor assembly	37	1	Return spring
16	2	Socket head cap screw M12 X 20mm	38	1	Supporting shaft
17	2	Washer M18	39	2	C-clip Ø25mm
18	2	Spring washer M18	40	1	Shoulder bolt M18 X 58.5mm
19	1	Shoulder bolt M18 X 31mm	41	1	Torsion spring
20	1	Handle socket	42	1	Back shaft
21	1	Handle socket screw	43	1	Seal kit
22	1	Handle socket pin			

Note: All parts are listed and shown for illustration purpose only, and are not available individually as replacement parts.

## TROUBLE SHOOTING

POSSIBLE PROBLEMS						POSSIBLE CAUSES AND SOLUTIONS (Refer to operation and maintenance procedures for detailed information)
Jack will not lift load	Jack will lift load, but will not hold	Jack will not lower completely	Poor jack lifting. Pump feels spongy	Jack will not lift to full height	Handle raises by itself when jack is under load	
X						Ensure that the release valve has been turned clockwise to a point at which it is firm/tight.
X			X	X	X	Air is in hydraulic system. Release air from system.
X	X		X	X		Oil level is low in jack. Add oil as required.
		X				1. Oil reservoir is over-filled. Drain out some oil. 2. Lubrication of all pivoting and moving parts is necessary.

## WARRANTY

Our product is guaranteed to be free from quality and manufacturing defects for a period of 12 months.

If your product becomes defective during this period, SRGS PTY LTD will offer you either a replacement, credit or refund where a product is faulty; wrongly described; different from the sample shown to you or do not do what they are supposed to do.

This warranty will not cover substantially modified product; misuse or abuse of the product contrary to user instructions or packaging label; change of mind and normal wear and tear.

Our goods come with guarantees that cannot be excluded under the Australian Consumer Law. You are entitled to a replacement or refund for a major failure and for compensation for any other reasonably foreseeable loss or damage. You are also entitled to have the goods repaired or replaced if the goods fail to be of acceptable quality and failure does not amount to a major failure.

To claim the warranty, take the product to the front Service Desk of your nearest store of purchase. You will need to show receipt or other proof of purchase. Additional information may be required to process your claim. Should you not be able to provide proof of purchase with a receipt or bank statement, identification showing name, address and signature may be required to process your claim.

Any expenses relating to the return of your product to the store will normally have to be paid by you. For online store purchases, SRGS PTY LTD will pay for the return freight for any product assessed as having a major failure.

The benefits to the customer given by this warranty are in addition to other rights and remedies of the Australian Consumer Law in relation to the goods or services to which this warranty relates.

This warranty is provided by SRGS PTY LTD, 6 Coulthards Avenue, Strathpine QLD 4500, Australia. Phone: 1300 175 010.