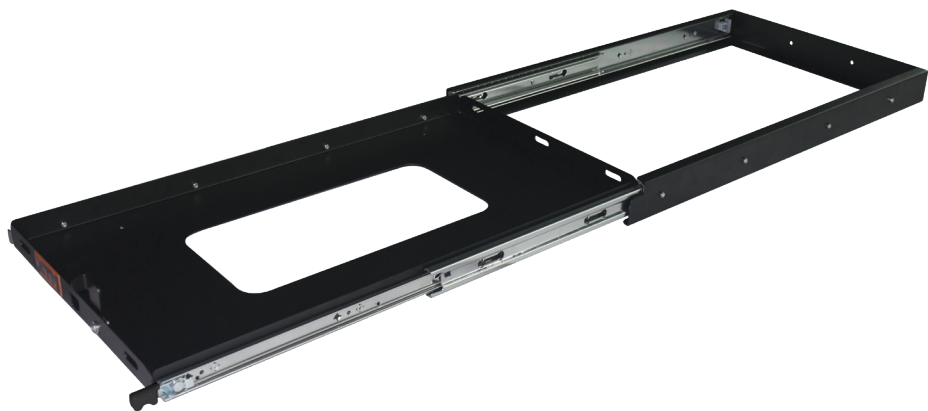


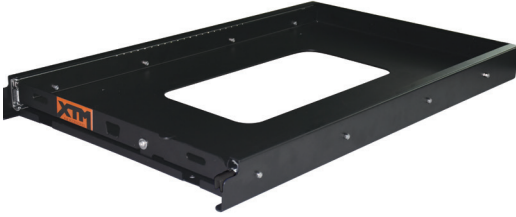
PLU: 592407
CODE: FS7543A
Manufactured and packaged for
SRGS PTY LTD
ABN 23 113 230 050
6 Coulthards Avenue, Strathpine,
QLD 4500, Australia
MADE IN CHINA

4x4 ACCESSORIES

+ FRIDGE SLIDE
Instruction Manual



+ Part List

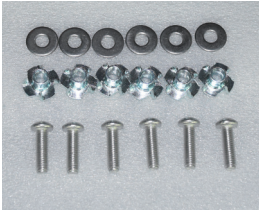


+ General Information

External size: L79.3 x W47.6 x H6.3cm

Internal tray size: L75 x W43 x H5cm

Net Weight: 13.4kg



+ Mounting Kit

6 x M6 washers

6 x M6 tee nuts

6 x M6 x 20mm bolts



+ Tie Down Kit

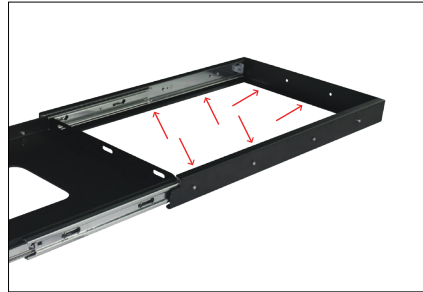
4 x nylon straps

+ Preparing for the Fridge Slide install

Slide needs to be installed on a flat even surface with a minimum of 12 cm thickness.
You will require the use of an electric drill to install the slide.



+ Open the slide by depressing the lock lever on the right, then pull slide forward to reveal the fixing holes in the side rails.



+ Mark the six drilling points through the slide fixing holes with a permanent marker.



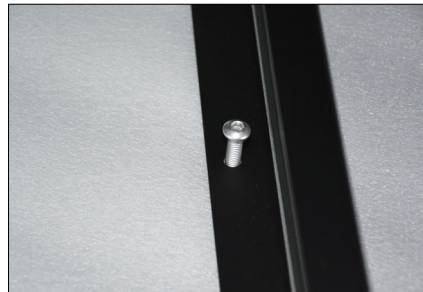
+ Drill six 7mm holes for the Tee Nuts.



+ Insert the Tee Nuts into the holes ensuring the nuts are upright and square to the hole.



+ Flatten the Tee Nuts with a mallet or hammer.



+ Position the fridge slide on the flat surface.
Use the 6 x M6 bolts to fix to the surface.

+ Tie Down the Fridge

Secure your fridge on the slide by using the 4 nylon straps supplied. Make sure the straps are tight and secure.



+ Important Notes

- The slide must be securely and evenly bolted down to the floor of the vehicle or to wherever the slide is to be used.
- Under no circumstances can the slide be used other than when it is fixed down correctly on a smooth even surface with no contortion of the frame.
- The sliding tray is activated by depressing the right hand side lever on the front to pull forward and lock in.
- Heavy pushing without depressing the lever will result in damage to the lever.
- Ensure that the tray is firmly locked into place when returning the tray to its inward position.
- This slide is designed to carry fridges up to 80kgs including contents. It is not recommended for commercial use and no warranty applies if used so.