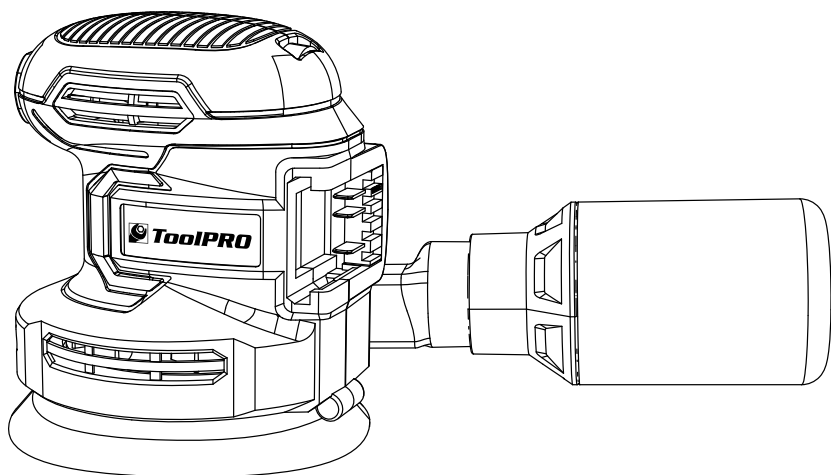


TOOLPRO

18V Rotary sander

Instruction Manual

CES18G.9



ToolPRO

After Sales Support

FREE CALL 1300 889 028
EMAIL: salesau@positecgroup.com

Important - Please read these instructions fully before operating or maintaining your Rotary sander

These instructions contain important information that will help you get the best from your li-ion rotary sander, ensuring it remains safe to operate.

If you need help or have damaged or missing parts, call the Customer Helpline on 1300 889 028

Contents

Safety Information	3
In The Box	9
Accessories	9
Operating Instructions.....	10
Working Hints For Your Sander.....	17
Maintenance	17
For Battery tools.....	17
Technical Data	18

Safety Information

Important - Please read these instructions fully before starting assembly

Warning Symbols



To reduce the risk of injury, Please read the instruction manual



Warning



Wear ear protection



Wear eye protection



Wear dust mask



Indoor use only



Batteries may enter water cycle if disposed improperly, which can be hazardous for ecosystem. Do not dispose of waste batteries as unsorted municipal waste.



Do not burn



Waste electrical products must not be disposed of with household waste. Please recycle where facilities exist. Check with your local authorities or retailer for recycling advice.



Li-Ion



Li-Ion

Li-ion battery. This product has been marked with a symbol relating to 'separate collection' for all battery packs and battery pack. It will then be recycled or dismantled in order to reduce the impact on the environment. Battery packs can be hazardous for the environment and for human health since they contain hazardous substances.



Fuse



Positive terminal



Negative terminal



RCM marking



Double insulation

ABN: Australian Business Number. By this number, business information such as entity type, status, business location etc. can be found at website <http://abr.business.gov.au>.
ABN of Positec Australia Pty Limited is 14 101 682 357

Safety Information

Important - Please read these instructions fully before starting assembly

General Power Tool Safety Warnings



WARNING! Read all safety warnings and all instructions. Failure to follow the warnings and instructions may result in electric shock, fire and/or serious injury.

Save all warnings and instructions for future reference.

The term "power tool" in the warnings refers to your mains-operated (corded) power tool or battery-operated (cordless) power tool.

1) Work area safety

- a) **Keep work area clean and well lit.** Cluttered or dark areas invite accidents.
- b) **Do not operate power tools in explosive atmospheres, such as in the presence of flammable liquids, gases or dust.** Power tools create sparks which may ignite the dust or fumes.
- c) **Keep children and bystanders away while operating a power tool.** Distractions can cause you to lose control.

2) Electrical safety

- a) **Power tool plugs must match the outlet. Never modify the plug in any way. Do not use any adapter plugs with earthed (grounded) power tools.** Unmodified plugs and matching outlets will reduce risk of electric shock.
- b) **Avoid body contact with earthed or grounded surfaces, such as pipes, and refrigerators.** There is an increased risk of electric shock if your body is earthed or grounded.
- c) **Do not expose power tools to rain or wet conditions.** Water entering a power tool will increase the risk of electric shock.
- d) **Do not abuse the cord. Never use the cord for carrying, pulling or unplugging the power tool.** Keep cord away from heat, oil, sharp edges or moving parts. Damaged or entangled cords increase the risk of electric shock.
- e) **When operating a power tool outdoors, use an extension cord suitable for outdoor use.** Use of a cord suitable for outdoor use reduces the risk of electric shock.
- f) **If operating a power tool in a damp location is unavoidable, use a residual current device (RCD) protected supply.** Use of an RCD reduces the risk of electric shock.

3) Personal safety

- a) **Stay alert, watch what you are doing and use common sense when operating a power tool. Do not use a power tool while you are tired or under the influence of drugs, alcohol or medication.** A moment of inattention while operating power tools may result in serious personal injury.
- b) **Use personal protective equipment.** Always wear eye protection. Protective equipment such as dust mask, non-skid safety shoes, or hearing protection used for appropriate conditions will reduce personal injuries.
- c) **Prevent unintentional starting.** Ensure the switch is in the off-position before connecting to power source and/or battery pack, picking up or carrying the tool. Carrying power tools with your finger on the switch or energising power tools that have the switch on invites accidents.
- d) **Remove any adjusting key or wrench before turning the power tool on.** A wrench or a

Safety Information

Important - Please read these instructions fully before starting assembly

General Power Tool Safety Warnings

- key left attached to a rotating part of the power tool may result in personal injury.
- e) **Do not overreach. Keep proper footing and balance at all times.** This enables better control of the power tool in unexpected situations.
 - f) **Dress properly. Do not wear loose clothing or jewellery. Keep your hair and clothing away from moving parts.** Loose clothes, jewellery or long hair can be caught in moving parts.
 - g) **If devices are provided for the connection of dust extraction and collection facilities, ensure these are connected and properly used.** Use of dust collection can reduce dust-related hazards.
 - h) **Do not let familiarity gained from frequent use of tools allow you to become complacent and ignore tool safety principles.** A careless action can cause severe injury within a fraction of a second.
- 4) Power tool use and care**
- a) **Do not force the power tool. Use the correct power tool for your application.**
The correct power tool will do the job better and safer at the rate for which it was designed.
 - b) **Do not use the power tool if the switch does not turn it on and off.** Any power tool that cannot be controlled with the switch is dangerous and must be repaired.
 - c) **Disconnect the plug from the power source and/or remove the battery pack, if detachable, from the power tool before making any adjustments, changing accessories, or storing power tools.** Such preventive safety measures reduce the risk of starting the power tool accidentally.
 - d) **Store idle power tools out of the reach of children and do not allow persons unfamiliar with the power tool or these instructions to operate the power tool.**
Power tools are dangerous in the hands of untrained users.
 - e) **Maintain power tools and accessories. Check for misalignment or binding of moving parts, breakage of parts and any other condition that may affect the power tool's operation.** If damaged, have the power tool repaired before use. Many accidents are caused by poorly maintained power tools.
 - f) **Keep cutting tools sharp and clean.** Properly maintained cutting tools with sharp cutting edges are less likely to bind and are easier to control.
 - g) **Use the power tool, accessories and tool bits etc. in accordance with these instructions, taking into account the working conditions and the work to be performed.** Use of the power tool for operations different from those intended could result in a hazardous situation.
 - h) **Keep handles and grasping surfaces dry, clean and free from oil and grease.**
Slippery handles and grasping surfaces do not allow for safe handling and control of the tool in unexpected situations.
- 5) Battery tool use and care**
- a) **Recharge only with the charger specified by the manufacturer.** A charger that is suitable for one type of battery pack may create a risk of fire when used with another battery pack.
 - b) **Use power tools only with specifically designated battery packs.** Use of any other

Safety Information

Important - Please read these instructions fully before starting assembly

General Power Tool Safety Warnings

battery packs may create a risk of injury and fire.

- c) **When battery pack is not in use, keep it away from other metal objects, like paper clips, coins, keys, nails, screws or other small metal objects, that can make a connection from one terminal to another.** Shorting the battery terminals together may cause burns or a fire.
- d) **Under abusive conditions, liquid may be ejected from the battery; avoid contact.** If contact accidentally occurs, flush with water. If liquid contacts eyes, seek medical help. Liquid ejected from the battery may cause irritation or burns.
- e) **Do not use a battery pack or tool that is damaged or modified.** Damaged or modified batteries may exhibit unpredictable behaviour resulting in fire, explosion or risk of injury.
- f) **Do not expose a battery pack or tool to fire or excessive temperature.** Exposure to fire or temperature above 130 °C may cause explosion.
- g) **Follow all charging instructions and do not charge the battery pack or tool outside the temperature range specified in the instructions.** Charging improperly or at temperatures outside the specified range may damage the battery and increase the risk of fire.

6) Service

- a) **Have your power tool serviced by a qualified repair person using only identical replacement parts.** This will ensure that the safety of the power tool is maintained.
- b) **Never service damaged battery packs.** Service of battery packs should only be performed by the manufacturer or authorized service providers.

Safety Warnings for battery pack

- a) **Do not dismantle, open or shred cells or battery pack.**
- b) **Do not short-circuit a battery pack. Do not store battery packs haphazardly in a box or drawer where they may short-circuit each other or be short-circuited by conductive materials.** When battery pack is not in use, keep it away from other metal objects, like paper clips, coins, keys, nails, screws or other small metal objects, that can make a connection from one terminal to another. Shorting the battery terminals together may cause burns or a fire.
- c) **Do not expose battery pack to heat or fire. Avoid storage in direct sunlight.**
- d) **Do not subject battery pack to mechanical shock.**
- e) **In the event of battery leaking, do not allow the liquid to come into contact with the skin or eyes. If contact has been made, wash the affected area with copious amounts of water and seek medical advice.**
- f) **Seek medical advice immediately if a cell or battery pack has been swallowed.**
- g) **Keep battery pack clean and dry.**
- h) **Wipe the battery pack terminals with a clean dry cloth if they become dirty.**
- i) **Battery pack needs to be charged before use. Always refer to this instruction and use the correct charging procedure.**
- j) **Do not maintain battery pack on charge when not in use.**
- k) **After extended periods of storage, it may be necessary to charge and discharge the battery pack several times to obtain maximum performance.**

Safety Information

Important - Please read these instructions fully before starting assembly

Safety Warnings for battery pack

- l) **Battery pack gives its best performance when it is operated at normal room temperature (20 °C ± 5 °C).**
- m) **When disposing of battery packs, keep battery packs of different electrochemical systems separate from each other.**
- n) **Recharge only with the charger specified by POSITEC. Do not use any charger other than that specifically provided for use with the equipment.** A charger that is suitable for one type of battery pack may create a risk of fire when used with another battery pack.
- o) **Do not use any battery pack which is not designed for use with the equipment.**
- p) **Keep battery pack out of the reach of children.**
- q) **Retain the original product literature for future reference.**
- r) **Remove the battery from the equipment when not in use.**
- s) **Dispose of properly.**

General Safety Warnings



WARNING: Read all safety warnings and all instructions. Failure to follow the warnings and instructions may result in electric shock, fire and/or serious injury.

Save all warnings and instructions for future reference.

- This appliance is not intended for use by persons (including children) with reduced physical, sensory or mental capabilities, or lack of experience and knowledge, unless they have been given supervision or instruction concerning use of the appliance by a person responsible for their safety.

- Children should be supervised to ensure that they do not play with the appliance.

If the supply cord is damaged, it must be replaced by the manufacturer, its service agent or similarly qualified persons in order to avoid a hazard.

Additional safety instructions for your Battery Charger

1. Before charging, read the instructions.
2. For charge ToolPRO battery pack only.
3. Do not charge a leaking battery.
4. Do not use chargers for works other than those for which they are designed.
5. Before charging, ensure your charger is matching the local AC supply.
6. The charging device must be protected from moisture.
7. Do not use the charging device in the open.
8. Do not short out the contacts of battery or charger.
9. Respect the polarity "+/-" when charging.
10. Do not open the unit and keep out of the reach of children.
11. Do not charge the batteries of other manufactures or ill-suited models.
12. Ensure that the connection between the battery charger and battery is correctly positioned and is not obstructed by foreign bodies.
13. Keep battery charger's slots free of foreign objects and protect against dirt and humidity. Store in a dry and frost-free place.
14. When charging batteries, ensure that the battery charger is in a well-ventilated area and away from flammable materials. Batteries can get hot during charging. Do not

Safety Information

Important - Please read these instructions fully before starting assembly

Additional safety instructions for your Battery Charger

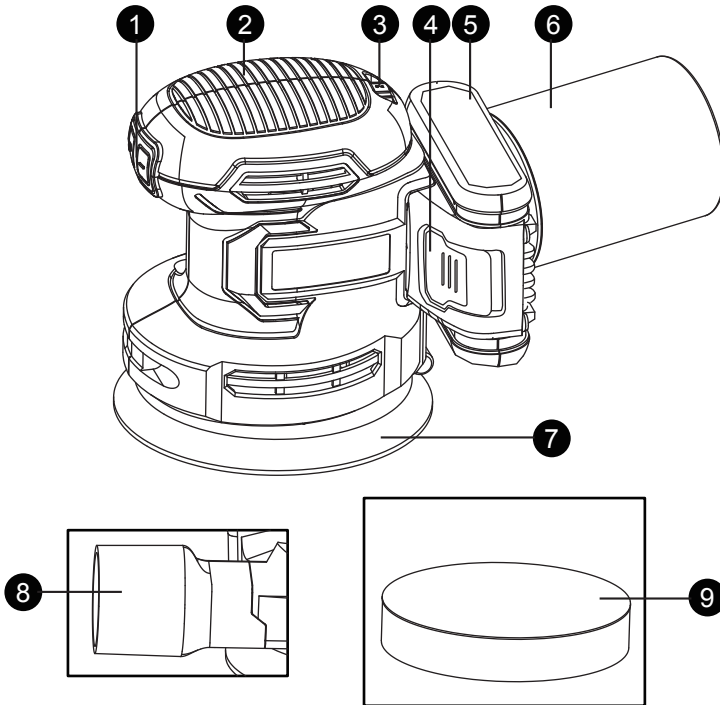
overcharge any batteries. Ensure that batteries and chargers are not left unsupervised during charging.

15. Do not recharge non-rechargeable batteries, as they can overheat and break.
16. Longer life and better performance can be obtained if the battery pack is charged when the air temperature is between 18°C and 24°C. Do not charge the battery pack in air temperatures below 4.5°C, or above 40.5°C. This is important as it can prevent serious damage to the battery pack.
17. Charge only battery pack of the same model provided by TOOLPRO and of models recommended by TOOLPRO

In The Box

Parts

- ① ON/OFF switch
- ② Hand grip area
- ③ Variable speed control
- ④ Battery pack release button *
- ⑤ Battery pack *
- ⑥ Dust bag
- ⑦ Rotary sanding plate
- ⑧ Vacuum adaptor
- ⑨ Polishing pad *



Accessories

Dust bag	1pc
Dust extraction adaptor 35mm	1pc
150mm (6") polishing pad	1pc
60 grit velcro sanding paper (125mm)	1pc
80 grit velcro sanding paper (125mm)	1pc
120 grit velcro sanding paper (125mm)	1pc

Operating Instructions



NOTE: Before using the tool, read the instruction book carefully.

Intended Use

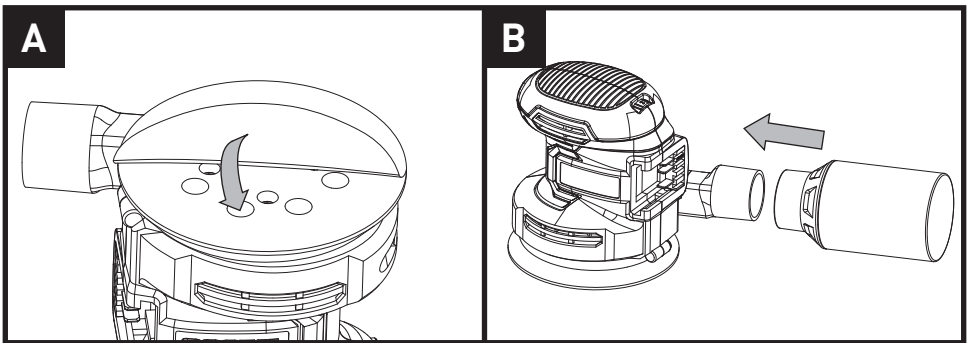
The machine is intended for dry sanding of wood, plastic, metal and filler material as well as painted surfaces.

Machines with electronic control are also suitable for polishing.

ASSEMBLY

1. ASSEMBLE THE SANDING PAPER (SEE FIG. A)

- 1) Remove any dust or other objects from the sanding plate and sandpaper.
- 2) The sandpaper has dust extraction holes you must align these with the holes in the sanding plate, otherwise the dust extraction will not function.



2. ASSEMBLE THE DUST BAG

—Attaching the dust bag (See Fig. B)

Always operate your sander with the dust bag fitted.

To attach, slide the dust bag onto tool.



CAUTION! To prevent the possibility of sanding dust or foreign body being thrown in to your face or eyes, never attempt to use your sander without the dust bag properly installed.

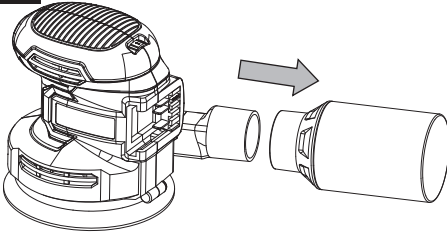
— Empty the dust bag (See Fig. C1, C2)

For more efficient operation, empty the dust bag every 5-10mins.

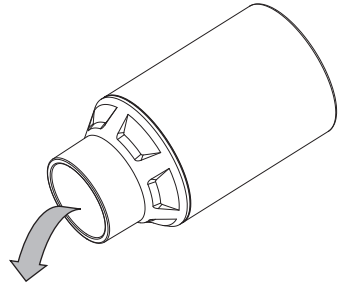
To empty the dust bag, pull the dust bag out and shake out dust.

Operating Instructions

C1



C2



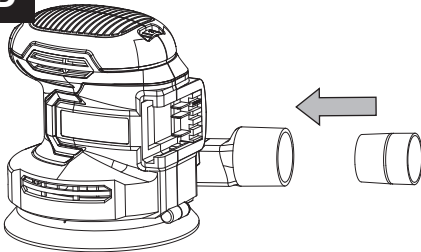
3. VACUUM ADAPTER (SEE FIG. D)

Your sander is equipped with a vacuum adapter , which is designed for collect dust task. Insert the adapter into the rear dust outlet of sander. Vacuum adaptor is designed to connect 35mm vacuum cleaner.

Pull the dust tube and make sure it is tightened securely on the dust outlet. Then connect the hose of a vacuum cleaner. First please turn on the vacuum cleaner, and then turn on the sander. If you stop sanding, first turn off the sander, then turn off your vacuum cleaner.

NOTE: Please always connect the adaptor with 35mm vacuum hose.

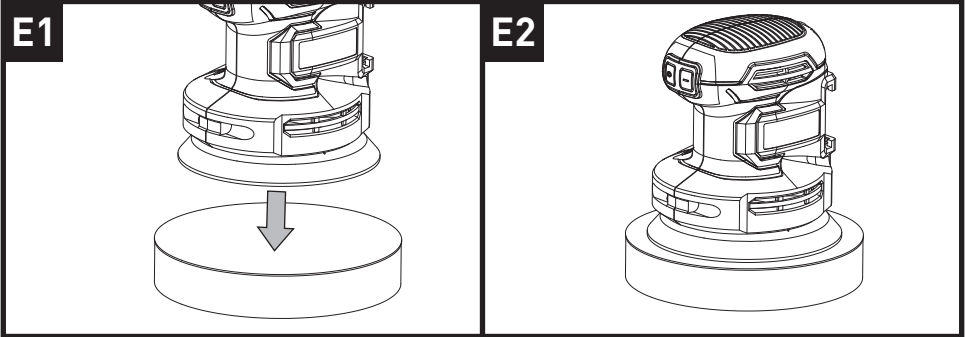
D



Operating Instructions

4. PLACE THE POLISHING PAD (SEE FIG E1 E2)

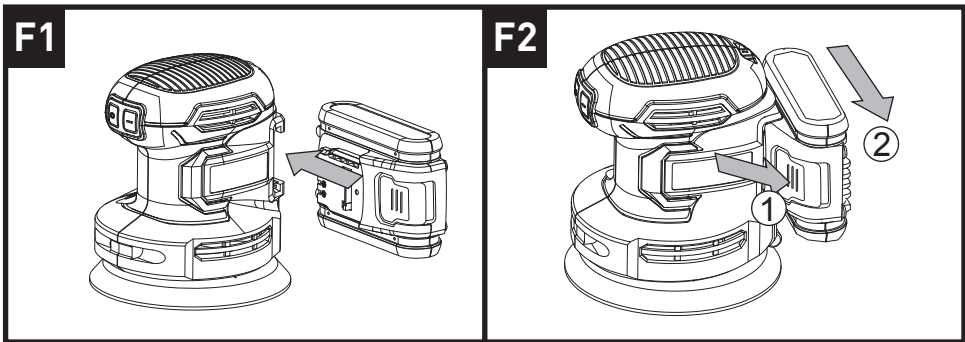
The machine is equipped with polishing pad. Place the polishing pad securely on the rotary plate and make sure it's centrosymmetric. Otherwise the polisher vibrates badly.



5. INSTALL AND REMOVE THE BATTERY PACK

Slide the fully charged Battery Pack onto the tool with sufficient force until it clicks into position. (SEE FIG F1)

Depress the Battery Pack Release Button firmly first and then slide the Battery Pack out from your tool. (SEE FIG F2)



6. CHARGER

CHARGING YOUR BATTERY PACK (See Fig. G1 G2 G3)

Do not use any charger other than that specifically provided for use with the equipment.

If the battery pack is very hot you must remove your battery pack from the charger and allow time for the battery to cool down before recharging.

Please charge the battery to reach full before storage. If the tool will not be used for long periods of time, charge the battery every 3 months.

CHARGING PROCEDURE

- 1) Plug the charger into an appropriate outlet. The light will be green.
- 2) Slide the battery pack into the charger, make sure the battery is in the

Operating Instructions

correct charge position firmly. the light will turn to red to indicate the charging process has started.

3) When charging is completed, the light will turn to green.

4) After fully charged, unplug the charger and remove the battery pack.

NOTE: If the battery pack is locked in the charger, press the battery pack release button and remove it.





! **WARNING:** When battery charge runs out after continuously use or exposure to direct sunlight or heat, allow time for the tool to cool down before re-charging to achieve the full charge.

Charging indicator

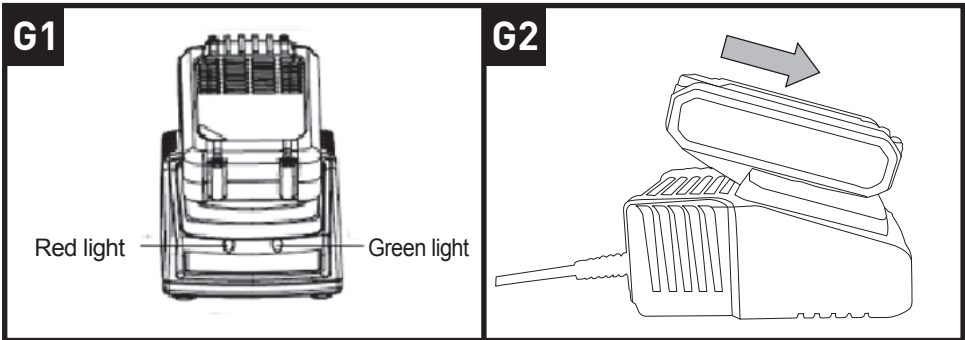
This charger is designed to detect some problems that can arise with battery packs.

Indicator lights indicate problems (see table below). If this occurs, insert a new battery pack to determine if the charger is OK. If the new battery charges correctly, then the original pack is defective and should be returned to a service center or recycling service center.

If the new battery pack displays the same problem as the original Battery Pack, have the charger tested at an authorized service center.

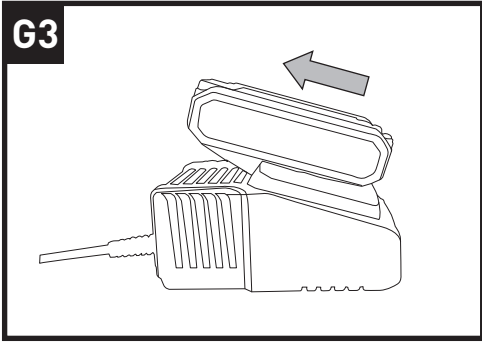
Light	ON/OFF flash	Status
Red on 	—————	Charging
Red flash 	- - - - -	Defective battery
Green on 	—————	Fully charged
Green flash 	- - - - -	Battery too Hot/cold

The accessories of battery charger (ACG18LD/ ACG18LD3/ ACG318GL/ ACG218Z2) and battery pack (ABP118L1/ ABP118L2/ ABP118L6/ ABP118L25/ ABP218L4Z/ ABP118G1/ ABP118G2/ ABP118G6/ ABP118G25) illustrated or described are not included in CES18G.9 delivery



Operating Instructions

G3



OPERATION

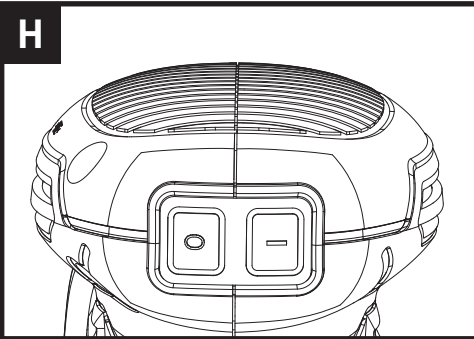
1. ON/OFF SWITCH (SEE FIG. H)

To start your sander, depress the protective cover over the switch indicated by the mark "I". To stop your sander, depress the protective cover indicated by the mark "O".

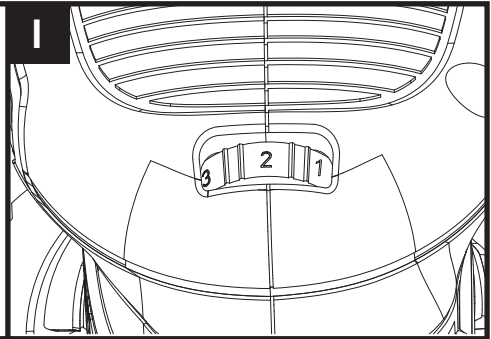
2. VARIABLE SPEED CONTROL (SETTING SPEED:1-5-MAX) (SEE FIG. I)

With the variable speed control, the required speed can be selected (also while running). The required speed is dependent on the material and is to be determined by a practical trial. After longer periods of working at low speed, allow the machine to cool down by running it for approx. 3 minutes at maximum speed with no load.

H



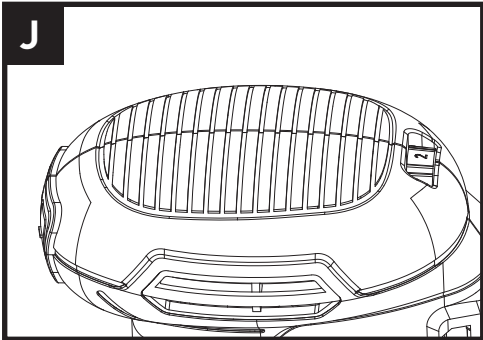
I



Operating Instructions

3. HAND GRIP AREA (SEE FIG J)

Your sander is designed to be held by the top of the main housing.



4. SANDING SURFACES

Place the machine with the complete Sand paper on the surface to be worked. Ensure uniform sanding pressure. Less sanding pressure increases the sanding capacity and protects the machine and the sanding tool. The removal capacity and the sanding pattern are determined mainly by the selection of the Sand paper (grain size), the speed of the sanding plate and the application pressure.

Rough sanding

Attach a Sand paper with coarse grain. Apply only light sanding pressure to achieve increased material removal.

Fine sanding

Attach a Sand paper with fine grain. With moderate pressure, move the machine in a circular pattern or alternately in lengthwise and crosswise directions over the workpiece. Do not tilt the machine to avoid sanding through the work piece (e.g. when sanding veneer). After finishing the work, switch off the machine and lift it from the workpiece.

5. ORBITAL SANDING

Guide your sander parallel to the working surface and move it in circles or in a cross pattern. Do not tilt the tool in order to avoid deep unwanted sanding marks. The amount of material removed is determined by the speed of the sanding disc and the grit size used. The speed of the sanding disc diminishes relative to the pressure applied to the tool. For faster removal, do not increase pressure on the tool, but use a coarser grit size.

6. SELECTING THE RIGHT GRADE OF SANDPAPER

- Different grades of sanding paper can be purchased from good DIY shops. Available grades are Coarse, Medium and Fine.
- Use coarse grits to sand down rough finishes, medium grit to smooth the work and fine grit to finish off.
- The higher the grade number, the finer the grit. For rough work start with a low grade of grit. (e.g. 60 grit) and change to a higher, finer grade (e.g. 120 grit) for finishing. If you use a fine grade for rough surfaces it will soon clog and need changing.
- It is best to make a trial run on a scrap piece of material to determine the optimum grades of sandpaper for a particular job.

Operating Instructions

7. POLISH

The polish can be used for polishing the surface with weathered paint or buffing out scratches. When polishing, select the "1" level. (See Fig. K).

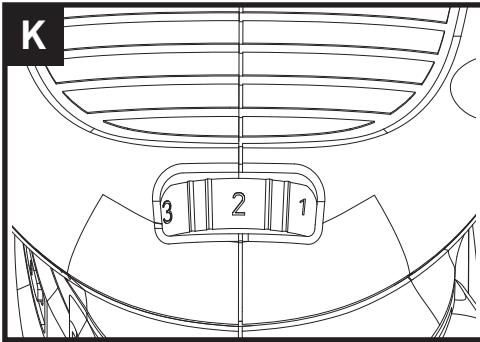
NOTE: Do not overheat the surface.

Spread about a tablespoonful of polishing compound evenly over the entire surface of the polishing pad, do not apply polishing compound directly onto the surface you intend to polish. For first application, polishing compound should cover at least 1/3 surface of polishing pad.

For the second and third applications of polish, repeat as above. The pad cover will not adsorb as much when reloading.

Do not allow the polishing pad to dry out on the surface, otherwise the surface can become damaged. Do not subject the surface to direct sunlight.

Clean the polishing pad regularly to keep good polishing results. Wash out polishing bonnet with a mild detergent and warm water.



Working Hints For Your Sander

If your power tool becomes too hot, especially when used at low speed, set the speed to maximum and run it with no load for 2-3 minutes to cool the motor. Avoid prolonged usage at very low speeds. Always use sand paper that is suitable for the material you want to sand. Always ensure the work-piece is firmly held or clamped to prevent movement.

Any movement of the material may affect the quality of the sanding finish.

Start your sander before sanding and turn it off only after you stop sanding. For the best results, sand wood in the direction of the grain.

Do not start sanding without having the sandpaper fitted.

Do not allow the sand paper to wear away it will damage the base-plate. The guarantee does not cover base-plate wear and tear.

Use coarse grit paper to sand rough surfaces, medium grit for smooth surfaces and fine grit for the final surfaces. If necessary, first make a test run on scrap material.

Use only good quality sand paper.

The sand paper controls the sanding efficiency, not the amount of force you apply to the tool. Excessive force will reduce the sanding efficiency and cause motor overload. Replacing the sand paper regularly will maintain optimum sanding efficiency.

Attention:

1. At all times, let the sander do the work-do not force it or apply excessive pressure to the sander. Preferably, use a light circular motion. Pressing too hard will slow down the machine's movement and affect the quality of the work.
2. The most common error, however, is applying too much wax. If pad absorbs too much wax, it will not last as long, and polishing is more difficult and takes longer. If wax seems difficult to buff, you may have used too much wax.
3. If pad continually comes off base plate, please try with a new pad.

Maintenance

Remove the battery pack from the tool before carrying out any adjustment, servicing or maintenance.

Your power tool requires no additional lubrication or maintenance. There are no user serviceable parts in your power tool. Never use water or chemical cleaners to clean your power tool. Wipe clean with a dry cloth. Always store your power tool in a dry place. Keep the motor ventilation slots clean. Keep all working controls free of dust. Occasionally you may see sparks through the ventilation slots. This is normal and will not damage your power tool.



If the supply cord is damaged, it must be replaced by the manufacturer, its service agent or similarly qualified persons in order to avoid a hazard.

For Battery tools

The ambient temperature range for the use and storage of tool and battery is 0°C-45°C. The recommended ambient temperature range for the charging system during charging is 0°C-40°C.

Technical Data

Technical Data Table

Charger Voltage	100-240V ~ 50/60Hz
Voltage	18V 
No load speed	3000-11000/min
Rotary sanding plate	125mm
Protection class	
Machine weight	1.04kg (without battery pack)

Staple your purchase receipt here
Before returning this product for
warranty or any other reason, please call.
POSITEC AUSTRALIA PTY LIMITED
ABN 14 101 682 357
Unit 15, 23 Narabang Way Belrose 2085 NSW Australia
FREE CALL 1300 889 028
EMAIL:salesau@positecgroup.com

