

60 LITRE PARTS WASHER



Value you can trust



60 LITRE PARTS WASHER

Instruction Manual



WARRANTY

This product is guaranteed against defects for a period of 12 months from date of purchase. This warranty is provided by Super Cheap Auto Pty Ltd ACN 085 395 124 (Supercheap Auto) of 751 Gympie Rd Lawnton QLD 4501 Ph (07) 3482 7500. Supercheap Auto will offer a repair, replacement product or store credit if the product is assessed as being defective during the warranty period.

To claim under this warranty, take this product to the Front Service Desk of your nearest Supercheap Auto store. For store locations, visit www.supercheapauto.com.au (AUS) or www.supercheapauto.co.nz (NZ). You will need your receipt or proof of purchase.

Additional information may be requested of you to process your claim. Should you not be able to provide proof of purchase with a receipt or a bank statement, identification showing your name, address and signature may be required to process your claim.

This product may need to be sent to the manufacturer to assess the defect before determining any claim. Faults or defects caused by product modification, misuse and abuse, normal wear and tear or failure to follow user instructions are not covered under this warranty. Our goods come with guarantees that cannot be excluded under the Australian Consumer Law. You are entitled to a replacement or refund for a major failure and for compensation for any other reasonably foreseeable loss or damage. You are also entitled to have the goods repaired or replaced if the goods fail to be of acceptable quality and the failure does not amount to a major failure.

Any expenses incurred relating to the return of this product to store will normally have to be paid by you. For more information contact your nearest Supercheap Auto store.

The benefits to the consumer given by this warranty are in addition to other rights and remedies of the Australian Consumer Law in relation to the goods and services to which this warranty relates.



Manufactured and packaged for SRGS PTY LTD ABN 23 113 230 050
751 Gympie Road, Lawnton, Queensland 4501, Australia

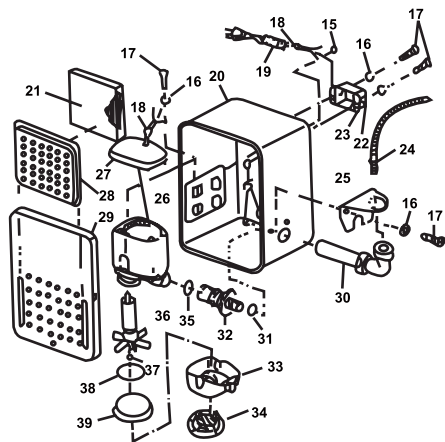
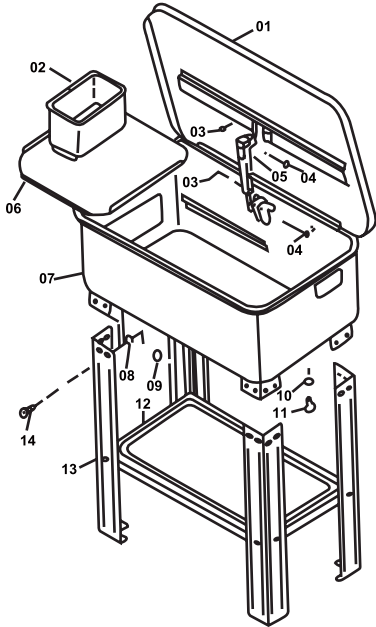
PLU 540601

WARNING

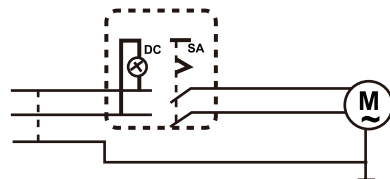
To avoid personal injury and/ or property damage, please read and follow ALL of these instructions before assembling and operating.

INTRODUCTION

The SCA 60 Litre Parts Washer is great for any garage or workshop. The all steel construction supports 60 litre tub



PARTS NO	DESCRIPTION	QTY
01	COVER	1
02	WORK BASKET	1
03	CLIP AND METAL WASHER	4
04	PIN	4
05	SAFETY PLATE	1
06	WORK SHELF	1
07	BODY	1
08	SPRING WASHER	24
09	NUT	24
10	O-RING	1
11	PLUG	1
12	SHELF	1
13	LEG	4
14	PAN SCREW	24
15	NUT	5
16	SPRING WASHER	5
17	SCREW	5
18	STRAIN RELIEF	2
19	CABLE AND PLUG	1
20	PUMP HOUSING	1
21	SCREEN	1
22	SWITCH	1
23	SWITCH BOX	1
24	FLEXIBLE PIPE	1
25	ELBOW SEAT	1
26	PUMP BODY	1
27	PUMP BACK COVER	1
28	FILTER COVER	1
29	PUMP HOUSING COVER	1
30	ELBOW	1
31	PLASTIC WASHER	1
32	SPIGOT	1
33	LOCATION OF KNOB	1
34	FILTER	1
35	SEALRING	1
36	IMPELLER	1
37	SHIN WASHER	2
38	SEALRING	1
39	IMPELLER HOLDER	1



ASSEMBLY INSTRUCTIONS

1. Remove machine from carton and inspect for any visual damage
2. Remove parts inside the machine
3. Lay clean and hard cardboard on the floor and lay machine on its lid.
(Make sure you hold cover closed when laying machine on its lid.)
4. Mount four legs on brackets with M6x12 phillips head screws and M6 nuts.
NOTE: DO NOT TIGHTEN.
5. Place lower shelf between legs with flat surface up and attach to legs with M6 x 12 phillips head screws and M6 nuts.
6. With legs press tight against lower shelf, tighten all screws to lower shelf.
7. Tighten all the screws installed in step 4.
8. Stand machine up, be careful to hold lid closed.
9. Put parts shelf and basket into the machine.
10. Mount pump assembly into slot on the side of machine, then place filter screen in position.
11. Plug machine into standard 240volt 50Hz grounded outlet and fill with proper amount of fluid.
12. Turn switch on. Fluid should now be flowing from the flexible hose.

SPECIFICATIONS	PARTS WASHER
Overall Dimensions	760x540x880mm
Max Solvent Capacity	60L
Max Pump Output Through Spigot	3.0L/min
Electrical Requirements	240V/50Hz/26W
Net weight:	23.63kgs

CLEANING SOLUTIONS

Approved cleaning solutions:
Water/household detergents (PH6-8)

WARNING

The pump of your Parts Washer may be damaged if you use solvents other than those listed above such as methylethyl keton (MEK), Perchloroethylene or trichlo-roethylene.

TROUBLE SHOOTING

The only trouble you should ever experience with your Parts Washer is reduced volume flow or no flow of cleaning liquid from the flex hose nozzle. The probable cause is foreign matter in the flex hose.

CORRECTIVE PROCEDURE

1. Check if indicator light on switch box is lit.
2. Using an insulated handle screw driver to lightly touch tip of housing of motor.
A light oscillation magnetic pull indicates power is reaching the motor.
3. Disconnect power plug, remove flex hose from pump flow-out line.
4. Remove front of pump housing. Clean any foreign matter lodged around impeller.
5. Reassemble in reverse order.