

# 450KG MOTORCYCLE LIFT TABLE



*Value you can trust*



# 450KG MOTORCYCLE LIFT TABLE

*Owners/Instruction Manual*



Manufactured and packaged for SRGS PTY LTD ABN 23 113 230 050  
751 Gympie Road, Lawnton, Queensland 4501, Australia

PLU 377786

# WARRANTY

This product is guaranteed against defects for a period of 12 months from date of purchase. This warranty is provided by Super Cheap Auto Pty Ltd ACN 085 395 124 (Supercheap Auto) of 751 Gympie Rd Lawnton QLD 4501 Ph (07) 3482 7500. Supercheap Auto will offer a repair, replacement product or store credit if the product is assessed as being defective during the warranty period.

To claim under this warranty, take this product to the Front Service Desk of your nearest Supercheap Auto store. For store locations, visit [www.supercheapauto.com.au](http://www.supercheapauto.com.au) (AUS) or [www.supercheapauto.co.nz](http://www.supercheapauto.co.nz) (NZ). You will need your receipt or proof of purchase. Additional information may be requested of you to process your claim. Should you not be able to provide proof of purchase with a receipt or a bank statement, identification showing your name, address and signature may be required to process your claim.

This product may need to be sent to the manufacturer to assess the defect before determining any claim. Faults or defects caused by product modification, misuse and abuse, normal wear and tear or failure to follow user instructions are not covered under this warranty.

Our goods come with guarantees that cannot be excluded under the Australian Consumer Law. You are entitled to a replacement or refund for a major failure and for compensation for any other reasonably foreseeable loss or damage. You are also entitled to have the goods repaired or replaced if the goods fail to be of acceptable quality and the failure does not amount to a major failure.

Any expenses incurred relating to the return of this product to store will normally have to be paid by you. For more information contact your nearest Supercheap Auto store.

The benefits to the consumer given by this warranty are in addition to other rights and remedies of the Australian Consumer Law in relation to the goods and services to which this warranty relates.

# IMPORTANT SAFETY INSTRUCTIONS

## WARNING:

**FAILURE TO HEED THESE INSTRUCTIONS MAY RESULT IN PERSONAL INJURY AND/OR PROPERTY DAMAGE.**

**PLEASE STUDY, UNDERSTAND, AND FOLLOW ALL INSTRUCTIONS BEFORE OPERATING THIS DEVICE.**

1. Do not exceed rated capacity (450KG). Be aware of dynamic loading! (Dynamic Loading is bouncing or dropping the load suddenly may create excess load causing product failure).
2. Use only on flat, hard & level surfaces.
3. Turn the support foot to raise the caster wheels end off the ground to prevent movement before loading, unloading, raising, or lowering.
4. Center load on lift platform.
5. Keep hands and body away from the lift when it's operating.
6. Immediately after lifting load, ensure that the Locking Bar is in place.
7. Before moving, ensure the load is at the lowest possible point.
8. Secure load with appropriate restraint device (Motorcycle tie down straps recommended).
9. Do not adjust the safety valve.
10. Wear heavy-duty work gloves and safety shoes during use.
11. Keep clear of load while lifting, moving and lowering.
12. Always lower load slowly.
13. Inspect before every use; do not use if parts are loose or damaged.
14. Keep work area clean and well lit. Cluttered or dark areas invite accidents.
15. Keep children and bystanders away while operating. Distractions can cause you to lose control.
16. Store idle lifts out of the reach of children and do not allow persons unfamiliar with the lift or these instructions to operate it. Lifts are dangerous in the hands of untrained users.
17. Untrained person/s cannot operate the lift. Have your lift serviced by a qualified repair person.
18. Do not allow anyone on the lift or the motorcycle while on the lift.
19. Before lowering, remove all tools and equipment from under lift.
20. Only use this lift to raise a motorcycle to perform maintenance. Do not attempt to transport or relocate motorcycle while on the Lift.
21. The warnings, cautions, and instructions discussed in this instruction manual cannot cover all possible conditions and situations that may occur. It must be understood by the operator that common sense and caution are factors which cannot be built into this product, but must be supplied by the user.

## SPECIFICATIONS:

CAPACITY : 450KG  
MIN HEIGHT : 180 MM  
MAX HEIGHT : 680 MM  
PLATFORM DIMENSIONS (LENGTH X WIDTH): 1900 X 530 MM

## ASSEMBLY INSTRUCTIONS:

1. This motorcycle lift includes three main parts: Base Plate (28), Lifting Arms (33 & 47) and Platform (42). (Fig.1)

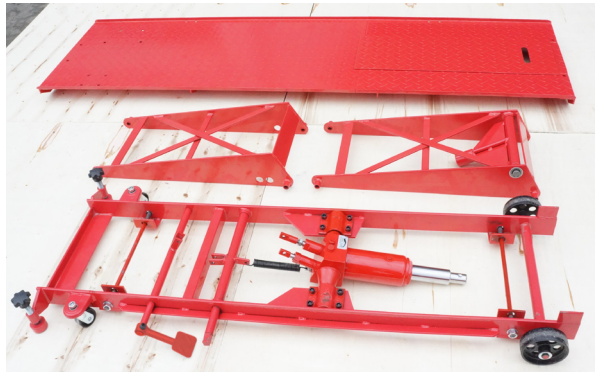


Fig. 1

2. Place the Base Plate (28) on the ground, and turn the knob of Support Foot (7) clockwise to raise Caster wheel end (11) off the ground (prevent Base Plate movement during assembly) (Fig.2)

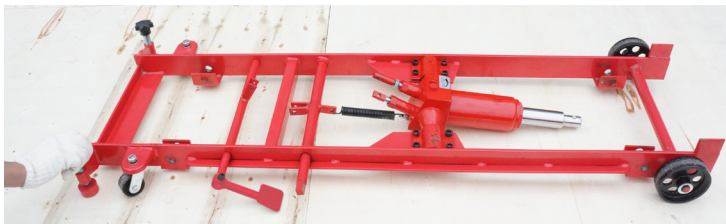


Fig. 2

3. Install Front Lifting Arm (47) and Rear Lifting Arm (33) onto Fixed Axis (2) of the Base Plate, and tighten Nuts (61) and Washers (60). (Fig.3)

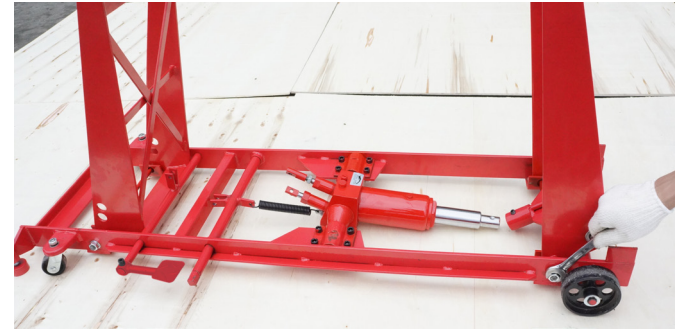


Fig. 3

4. Turn the piston rod of Hydraulic Pump (39) to make the concave hole on the piston rod aligned with the screw hole on Pump Connector (38), then insert the piston rod into Pump Connector and tighten locking screw (37) (Fig. 4,5)

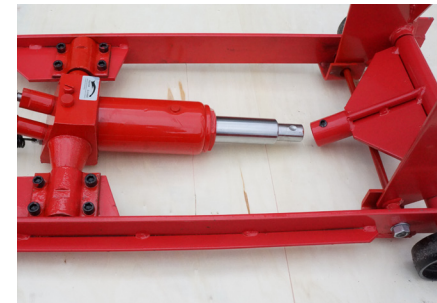


Fig. 4

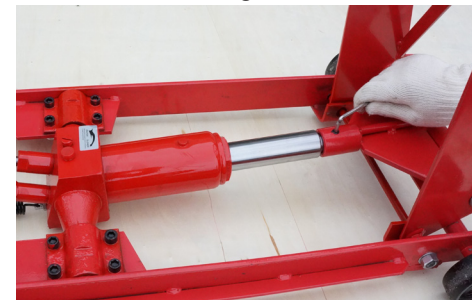


Fig. 5



5. Connect the Short Link (20) onto pump rod and Pump Piston Spindle (16), and tighten the Bolt (30), Washer (12) and Lock Nut (32).  
Connect the Long Link (31) onto release rod and Release Valve Spindle (14), and tighten the Bolt (30), Washer (12) and Lock Nut (32). (Fig.6)

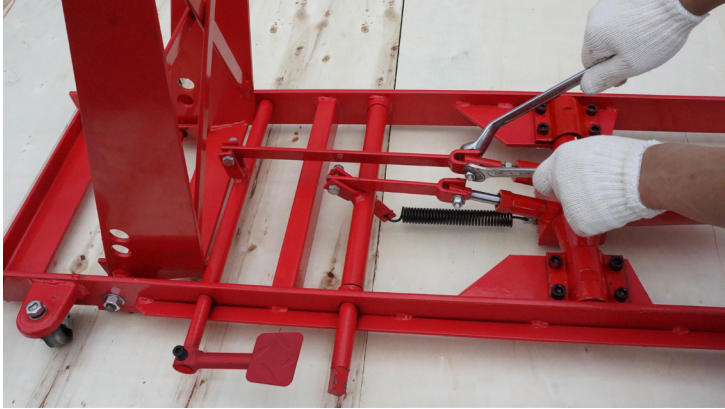


Fig. 6

6. Fit the Lift Foot Pedal (18) over the Pump Piston Spindle (16). (Fig.7)



Fig. 7

7. Insert the Locking Bar (49) into holes on Lifting Arm to support the Lifting Arm. Then adjust the Hydraulic Pump to keep two Lifting Arms on same level, and it will be easy to fit the platform onto the two Lifting Arms (Fig.8, 9).

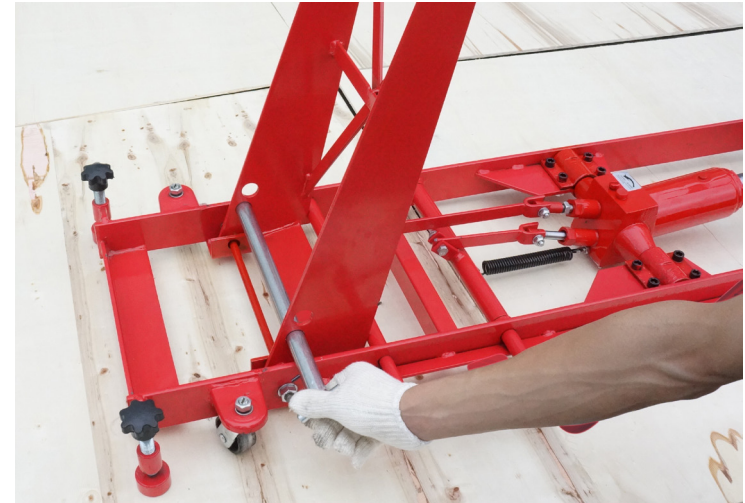


Fig. 8



Fig. 9

8. Assemble the Platform onto the top of two Lifting Arms with Pins (21), Washers (3) and Retainer Rings (22). (Fig.10)



Fig. 10

9. Fit the Ramp (40) and Access Panel (41) onto the Platform (Fig.11).

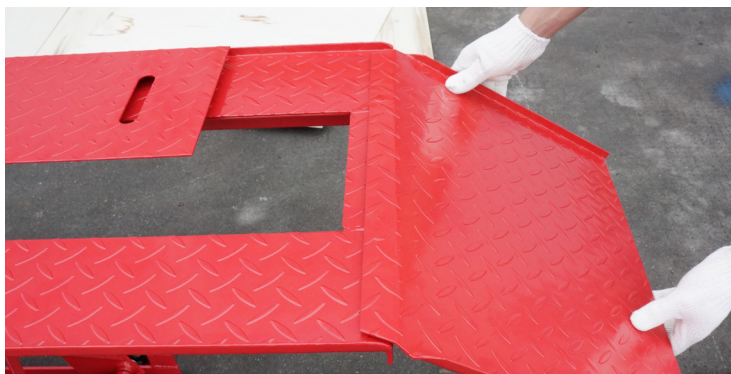


Fig. 11

10. Fit the Clamp Assembly (52, 53 & 56) and Stop Plate (54) onto Platform with Bolts (51), Nuts (43) and Washers (44) and tighten securely (Fig.12).



Fig. 12

11. Assemble four (4) Metal hoops (62) onto platform with Washers (63) and Nuts (64) (Fig.13).



Fig. 13

## BEFORE FIRST USE:

1. Check and fill oil as needed.
  - Pump Lift Foot Pedal (18) to raise the lift, and check if the lift can rise to its highest position. If not, you will need to remove the oil filler plug on the jack to add oil.  
**NOTE:** Add Hydraulic Jack fluid only. Avoid mixing different brands of oils. Do not use any other fluid or brake fluid.
2. Pump "Lift" Foot Pedal (18). If the motorcycle lift does not elevate smoothly or Pedal (18) feels "spongy", then you need bleed the Lift Jack according to the following;  
Air Bleeding instructions.
  - Lower the lift completely.
  - Depress Release Foot Pedal (15).
  - Pump the Lift Foot Pedal (18) several times.
  - Let up on Release Foot Pedal (15).
  - Remove Oil Filler Plug to release air trapped inside pump.
  - Replace Oil Filler Plug onto pump.
3. Test the Lift several times for proper operation before attempting to lift a load. If, after bleeding twice, the Lift still does not appear to be working properly, do not use the Lift until it has been repaired by a qualified service technician.

## OPERATING INSTRUCTION:

### Lifting:

1. Position the lift on a flat, level & hard surface; keep the platform and ramp at the lowest height.
2. Turn the knob of support foot clockwise to evenly raise the Casters (11) off the ground and limit movement.
3. Roll the motorcycle onto the platform, clamp the front wheel of the motorcycle into the clamp assembly to prevent movement of the wheel and secure it in place.
4. Secure the motorcycle to the lift using tie-down straps (not included). See motorcycle's owner manual for locations of strap attachments.
5. Pump the lift foot pedal repeatedly to raise the lift.
6. When the platform has been raised to working height, insert the locking bar into the holes in the front lifting arm so that the lift cannot be accidentally lowered.
7. Gently press release foot pedal to lower the platform to make the locking bar contact the frame of base plate.

### Lowering:

1. Remove all tools, parts, etc. from under the Lift.
2. Slightly raise the platform to free the Locking Bar.
3. Remove the locking bar, and then slowly press the "release" foot pedal to lower down the lift.  
**NOTE:** You can adjust the speed control valve on pump according to the operation requirement (If adjusted clockwise, the rate of decline will be slow; if adjusted anticlockwise, the rate of decline will be quick).  
**The rate of decline will vary depending on the weight of the motorcycle.**
4. After lowering, open the wheel clamp assembly and remove the motorcycle from the lift.
5. Turning the knob of support foot counterclockwise to lower the lift onto the caster wheels.
6. Store the lift in a safe, dry location out of reach of children.

## MAINTENANCE AND SERVICING:

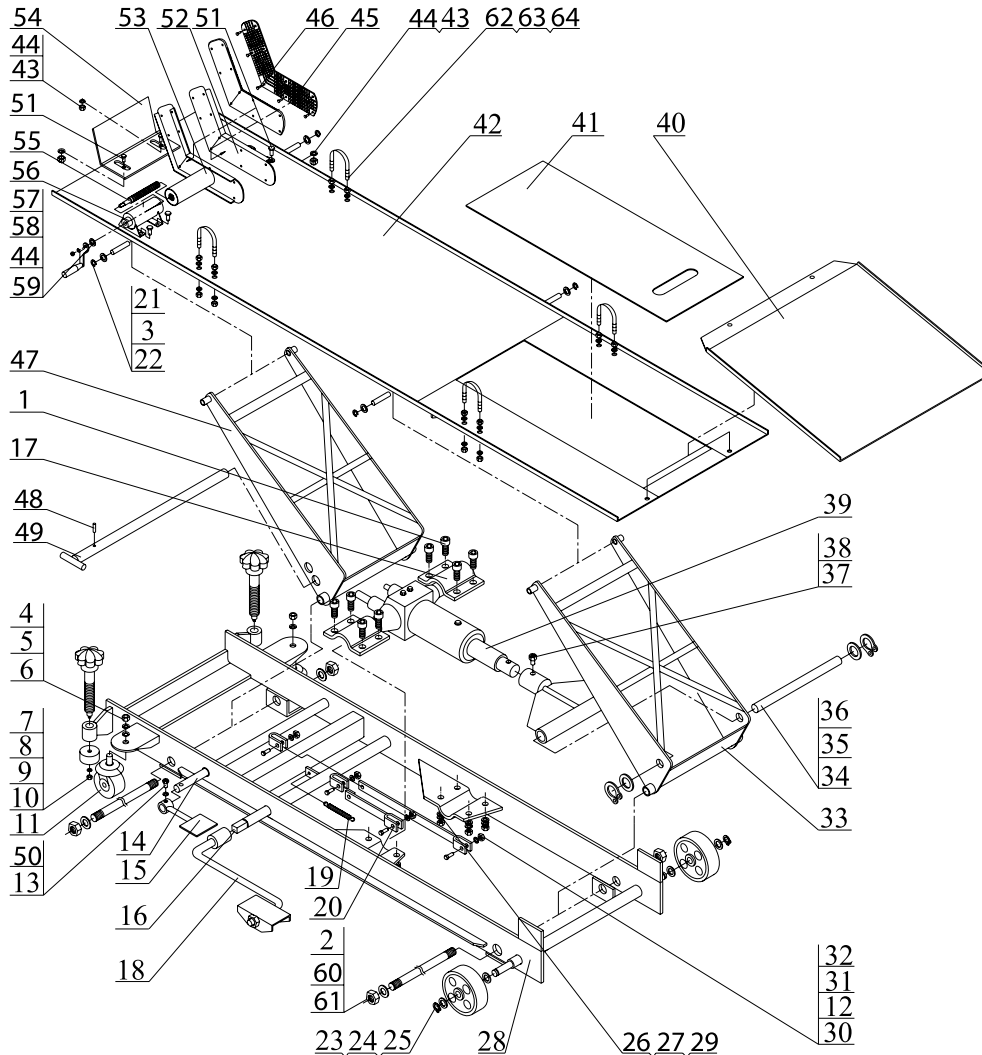
1. Before each use, inspect the general condition of the lift. Check for broken, cracked, loose or missing parts, and any condition that may affect the proper operation of the product. If a problem occurs, have the problem corrected before further use.
2. The mechanical parts of the lift, such as the lift foot pedal and release foot pedal should be periodically lubricated with heavy oil or grease.
3. Protect the lift pump from dirt or grit when in the raised position. If it becomes dirty, wipe it off with a clean cloth before lowering.
4. Maintain and store the Lift in a reasonably protected environment. Do not expose to rain or excess moisture. Protect from salt water or other corrosive materials. If it becomes dirty or contaminated, clean it promptly with clean water or a suitable detergent. If using a pressure washer, be aware that you may remove some paint from the outer surface. Never spray a pressure washer at the seal areas near the pistons or valves. Lubricate external moving parts after cleaning.

### NOTE:

1. If the lift can be raised to its highest position, it indicates that there is enough oil. If the lift slowly lowers from this position, it indicates that the problem is likely with the seals.
2. Do not tamper with the safety valve. Any repairs should be performed by a qualified technician.



## FRAME ASSEMBLY DIAGRAM:



## PARTS LIST:

No.	Description	Qty	No.	Description	Qty
1	Bolt M10X25	8	33	Rear lifting arm	1
2	Fixed axis	2	34	Lifting arm spindle	1
3	Washer Ø12	8	35	Washer Ø20	2
4	Washer Ø10	2	36	Retainer ring Ø20	2
5	Spring washer Ø10	2	37	Locking Screw M10X10	1
6	Nut M10	2	38	Pump connector	1
7	Support foot	2	39	Hydraulic pump	1
8	Support seat	2	40	Ramp	1
9	Washer Ø6	2	41	Access panel	1
10	Lock nut M6	2	42	Platform	1
11	Caster	2	43	Nut M10	10
12	Washer Ø8	4	44	Washer Ø10	11
13	Bolt M8X20	1	45	Rubber tile	2
14	Release valve spindle	1	46	Screw M6X16	20
15	Release foot pedal	1	47	Front lifting arm	1
16	Pump piston spindle	1	48	Spring pin Ø4X20	1
17	Pump base	2	49	Locking bar	1
18	Lift foot pedal	1	50	Spring washer Ø8	1
19	Spring	1	51	Bolt M10X30	10
20	Short link	1	52	Fixed clamp assembly	1
21	Pin Ø12	4	53	Movable clamp assembly 1	1
22	Retainer ring Ø12	8	54	Stop plate	1
23	Straight wheel	2	55	Screw rod	1
24	Washer Ø14	4	56	Movable clamp assembly 2	1
25	Retainer ring Ø14	2	57	Washer Ø14	1
26	Washer Ø10	8	58	Handle assembly	1
27	Spring washer Ø10	8	59	Lock nut M10	1
28	Base plate	1	60	Washer Ø16	4
29	Nut M10	8	61	Nut M16	4
30	Bolt M8X35	4	62	Metal hoop	4
31	Long link	1	63	Washer Ø8	16
32	Lock nut M8	4	64	Nut M8	16