



## INSTRUCTIONS GUIDE FOR:

### TX-102 Bike Carrier

59400 - AUS

### TX - 103 Bike Carrier

59403 - AUS

Date of Purchase:  /  /

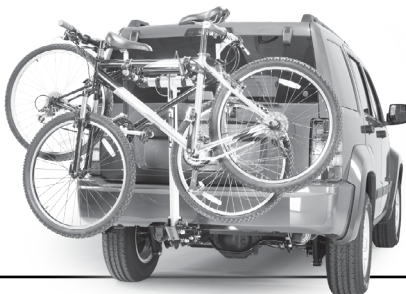
These instructions contain IMPORTANT safety information. Please read and keep for future reference.

## WARNING

The user must read and understand these Instruction Sheets and the Warranty.

Installation is the end user's responsibility and beyond Rola's control. Therefore, Rola exclusively limits its Warranty to the repair or replacement of a defective product. Damage to your vehicle, your cargo or any person or property is excluded.

- Your bike carrier must be inspected for signs of wear, corrosion and fatigue before each use. DO NOT use if bent or deformed.
- Make sure your bike carrier is secure before every trip. Check at each stop to ensure your bike carrier is secure.
- DO NOT exceed your bike carrier's rated capacity. The capacity is **36kg** for 2-bike carrier and **45kg** for 3-bike carrier.
- Do not attempt to drill, weld, or modify your bike carrier or any of the system components.
- This carrier is designed for typical use and applications (on paved or smooth gravel roads). Do not use this carrier on a vehicle that will be driven on rough roads, or where the carrier (and bikes) will be subjected to significant or constant jarring and or shock, or any vehicle with very stiff springs that will transfer the load shocks directly to the carrier and the bikes.
- The recommended minimum ground clearance is 35cm. Damage to bicycles or carrier due to ground clearance problems are not covered by warranty.
- Bike tires should be at least 15cm away from exhaust pipe.
- DO NOT use this bike carrier with recreational vehicles, trailers or in off road situations.
- DO NOT use your bike carrier for purposes other than those for which it was designed.
- REDUCE YOUR SPEED. Your vehicle can handle differently when transporting cargo on the rear of your vehicle.
- FREQUENTLY check your bike carrier and that the bikes are secure. Bikes can shift or your bike carrier can loosen during travel.
- Readjust as needed. If movement continues, stop use.
- ALWAYS unload bikes before removing your bike carrier from hitch.
- Check local and state laws governing projection of objects beyond the perimeter of a vehicle.
- ALWAYS obey all posted speed limits and be aware of traffic conditions. Adapt your speed to the conditions of the road and the load being carried.
- The proper attachment of this product in accordance with the enclosed instructions is critical to its proper performance. See instructions for proper attachment, proper usage, and important safety messages. Rola has no control over, or responsibility for, the attachment or the installation. Rola is NOT responsible nor will it be held liable for any damage resulting from its attachment or improper use. Rola shall not be liable for any claims of any kind greater than the purchase price of the product. For detailed warranty information visit [rola.com.au](http://rola.com.au)
- NOTICE: Your bike carrier will not prevent property damage that may result from improper loading, securing, or driving. Ensure all locks are locked, that all pins are secured, and that all straps are properly attached prior to moving the vehicle.
- Ensure your number plate is visible at all times. Check local and state laws for compliance information.



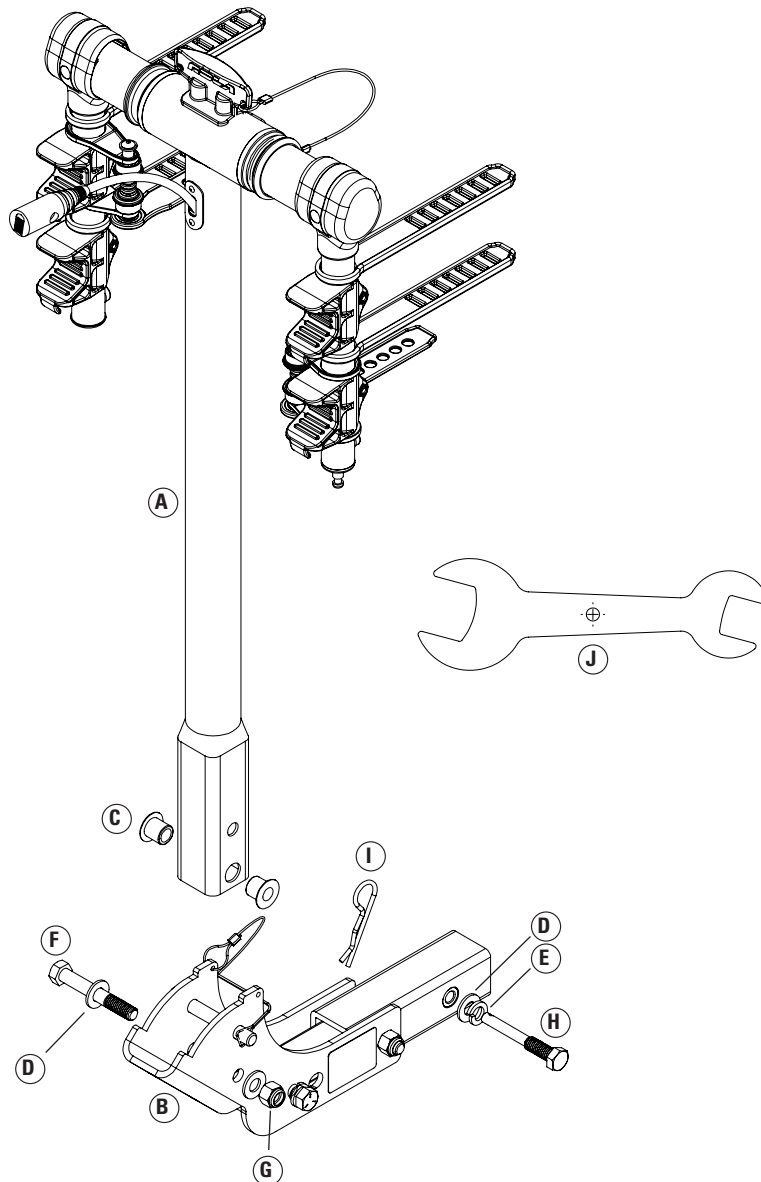
Review all Warnings, Instructions, and Warranty information carefully. Failure to follow these warnings and instructions will void the Warranty.

ROLA®, a Cequent Brand  
49 Pacific Drive  
Keysborough VIC 3173  
PH: 1800 812 017  
[www.rola.com.au](http://www.rola.com.au)

### PARTS LIST

**Tools required for assembly:** (1) 3/4" spanner. Spanner included (J)

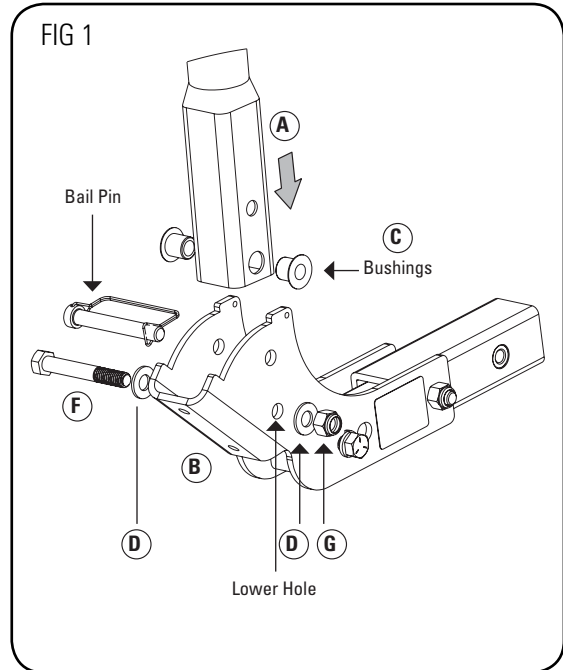
PART	DESCRIPTION	QTY.	PART	PART	QTY.
A	Main Support Tube	1	F	1/2 - 13 x 3 - 1/2 Hex Bolt	1
B	Collar Bracket	1	G	1/2" - 13 Lock Nut	1
C	Bushing	2	H	5/8" Rattle Pin	1
D	1/2" Flat Washer	3	I	R-Clip	1
E	5/8" Lock Washer	1	J	Spanner	1



## ASSEMBLY INSTRUCTIONS

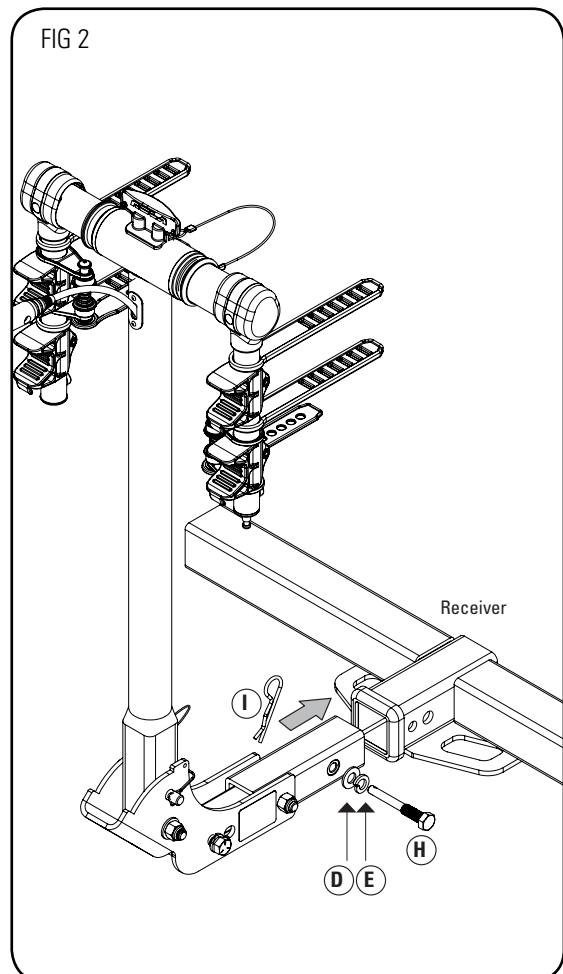
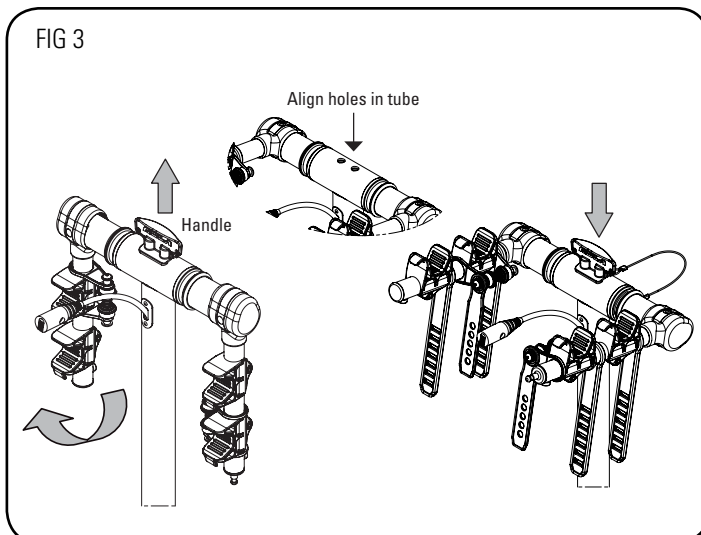
### TO ATTACH MAIN SUPPORT TUBE TO COLLAR BRACKET:

1. Pull bail pin from collar bracket (B). **FIG 1.**
2. Insert bushings (C) into main support tube (A). Then, connect main support tube (A) to collar bracket (B) as shown in **FIG 1**. Align bushing hole with lower hole in collar bracket and install one (1) ½-13x3-½" lg. hex bolt (F), two (2) ½" flat washers (D), and ½" locknut (G) as shown. Tighten ½" locknut until some resistance is felt when rotating main support tube. Align remaining hole in main support tube with hole in collar bracket and install bail pin.



### INSTALLING ON VEHICLE:

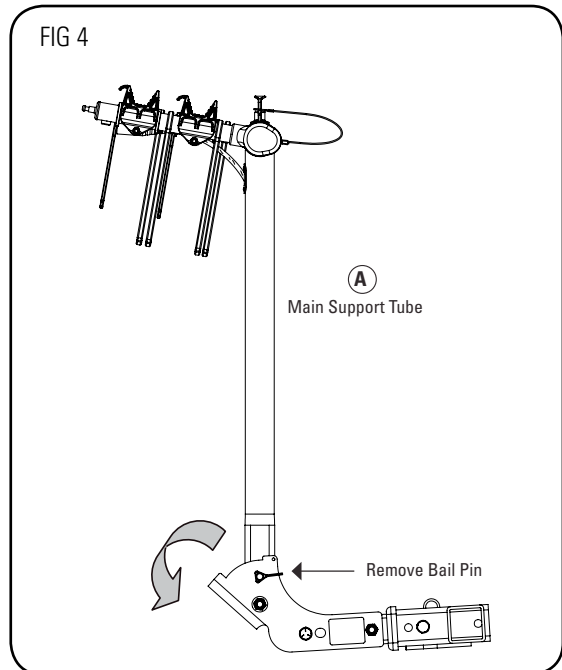
1. Slide shank end into receiver. **FIG 2.** Insert anti-rattle pin (H) with 5/8" lock washer (D) and tighten securely with supplied spanner (J) then install R-clip (I).
2. Pull handle upward and remove. Rotate arms to the "up" position (until holes in tube align). **FIG 3.**
3. Insert handle into the holes and push downward to secure. **FIG 3.**



## ASSEMBLY INSTRUCTIONS

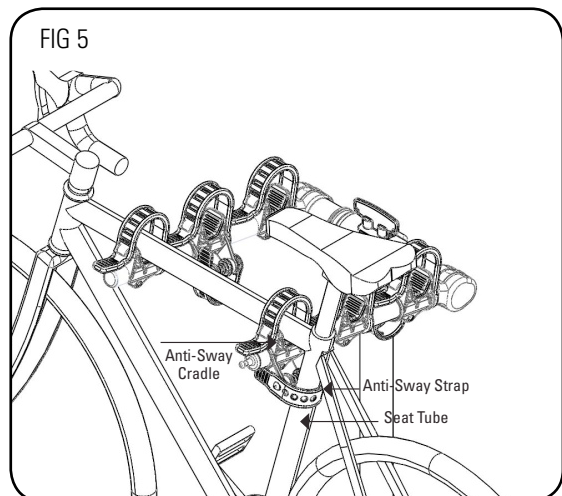
### FOLDING CARRIER FOR HATCH/TRUNK CLEARANCE:

1. Securely hold main support tube (A) and remove bail pin. **FIG 4.**
2. Lower the main support tube slowly until it is on the collar bracket. **NOTE:** Do not drop or let the main support tube fall freely. Make sure that your hands and fingers are clear of the hinging areas during this operation.
3. To restore the carrier to the upright position, reverse procedure.



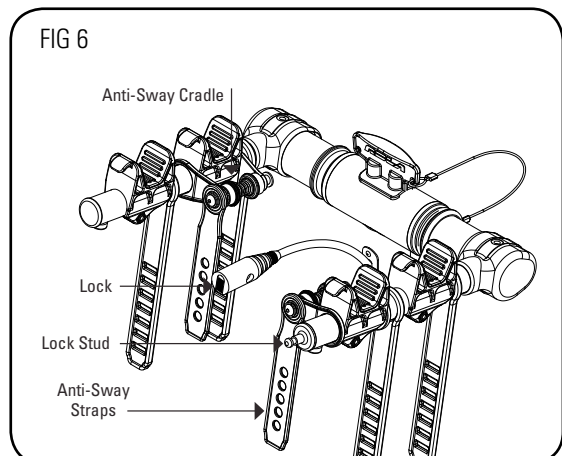
### BIKE LOADING INSTRUCTIONS:

1. Once carrier is secured to vehicle, bikes can be loaded onto the rack. Alternate each bike, with the anti-sway cradle being closest to the seat tube. **FIG 5.**
2. Secure the bikes by pulling the straps over the top of the bike frame. **FIG 5.** The anti-sway straps wrap around the seat tube and prevent the bike from swaying. **FIG 5.**
3. Check the straps periodically, and after stopping, to ensure that they are still tight and that someone has not released them. **NOTE:** Ensure all locks are locked, that all pins are secured, and that all straps are properly attached prior to moving the vehicle. Failure to do so will void warranty.



### LOCKING BIKES:

1. Once carrier and bikes are secured to vehicle, lock can be routed between bike frames and secured to the stud on the right arm.
2. Once unlocked, lock cable can be pushed back into the support tube for storage. **FIG 6.**



### BIKE COMPATIBILITY

The Rola TX-102 and TX-103 Bike Carrier is compatible with most bike frame top tubes. Please ensure that you have checked that this product is right for you. Failure to do so may result in damage to the product or to any other property. Rola is NOT responsible nor will be held liable for any damages resulting from failure to ensure compatibility with the product.

A diagram is available below which indicates compatibility with commonly available top tubes. This should be used as a rough guideline and actual compatibility should be verified with the product before it is fitted.

The height of the cradle is 30mm, and the height of the rubber padding is 24mm. The cradle can accommodate round top tubes with a diameter between 30mm and 41mm. Any top tubes that fall outside this range or have a different profile is incompatible.

